

---

**Netrust Pte Ltd**

---



**IPOS**

**Installation Guide**

**Version 1.0**

# **IPOS**

## **Installation Guide**

Version: 1.0

Prepared By: Lim Sheng Yong

Date Created: 30<sup>th</sup> September 2008

IPOS Installation Guide	Version: 1.0
	Issue Date: 30 <sup>th</sup> September 2008

## Revision History

<b>Date</b>	<b>Version</b>	<b>Description</b>	<b>Author</b>
30 <sup>th</sup> September 2008	1.0	First Issue	Lim Sheng Yong

IPOS Installation Guide	Version: 1.0 Issue Date: 30 <sup>th</sup> September 2008
----------------------------	---

## Table of Content

1.0 Introduction	5
2.0 Notations	5
3.0 Things to Note before installing	5
4.0 Installation Guide	6
4.1 Installing Safenet Borderless Security + ikey Driver v4.0.0.20	6
4.2 Installing EESP 8	8
4.3 Installing ESPCOMPAT	10

IPOS Installation Guide	Version: 1.0
	Issue Date: 30 <sup>th</sup> September 2008

## 1.0 Introduction

This document is to teach user how to install SafeNet token driver, EESP and ESP compatibility kit

## 2.0 Notations

**[Folder Name]** : Name of Folder

**{File Name}** : Name of File

E:\ : Drive of the CD-ROMs

## 3.0 Things to Note before Installing

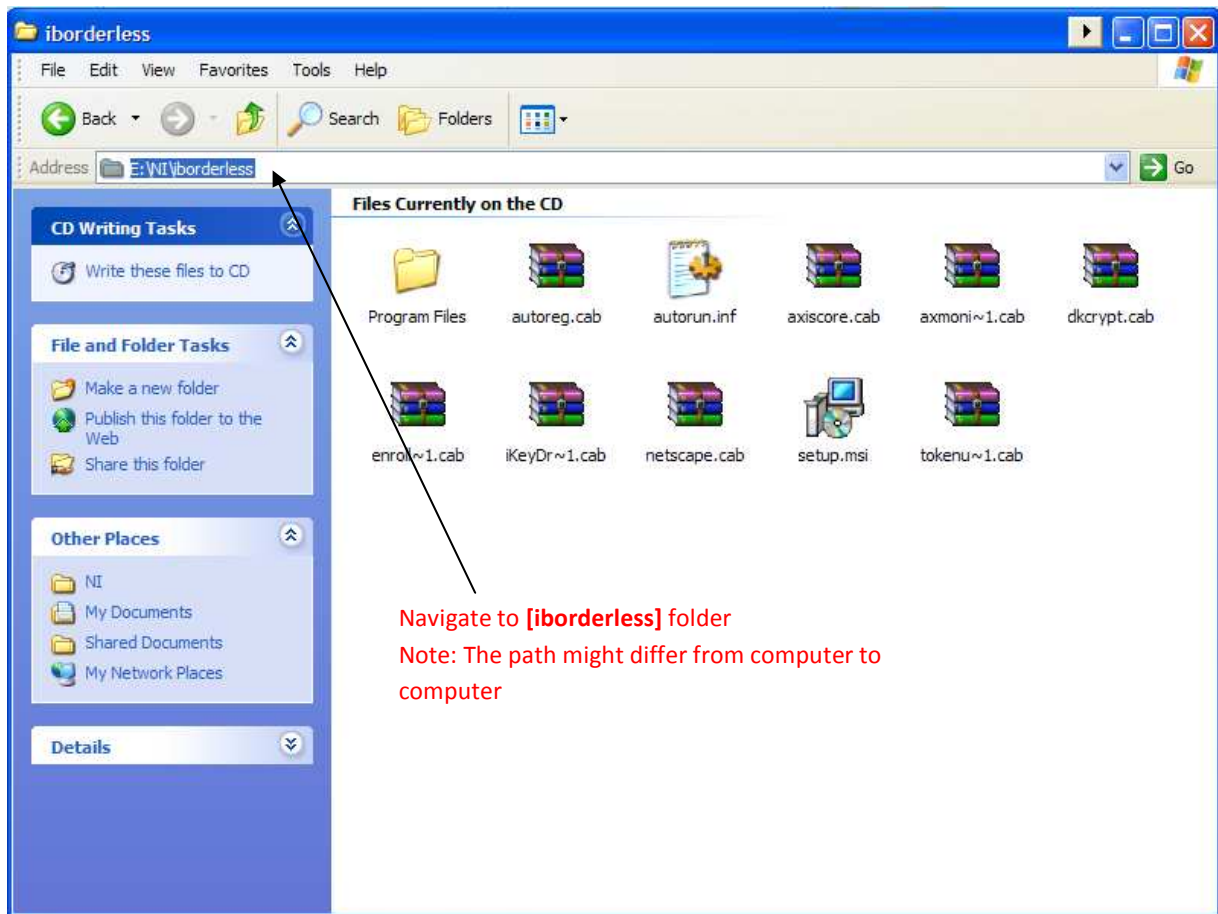
Please ensure that the following programs are uninstalled:

1. Netrust Desktop Solution 7.0
2. Netrust Security Provider
3. Netrust Security Client

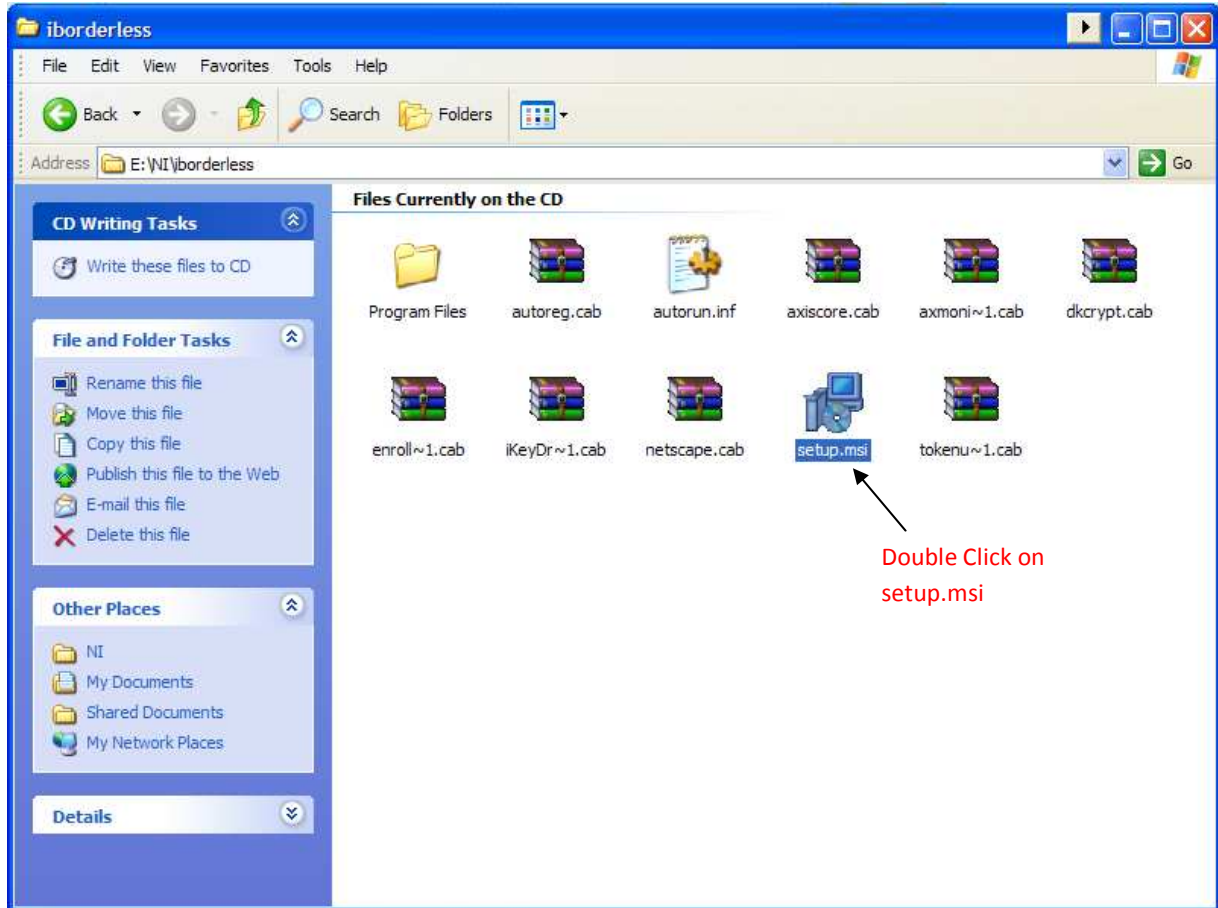
### 3.0 Installation Guide

#### 3.1 *Installing Safenet Borderless Security + ikey Driver v4.0.0.20*

Step 1: Navigate to **[iborderless]** folder.



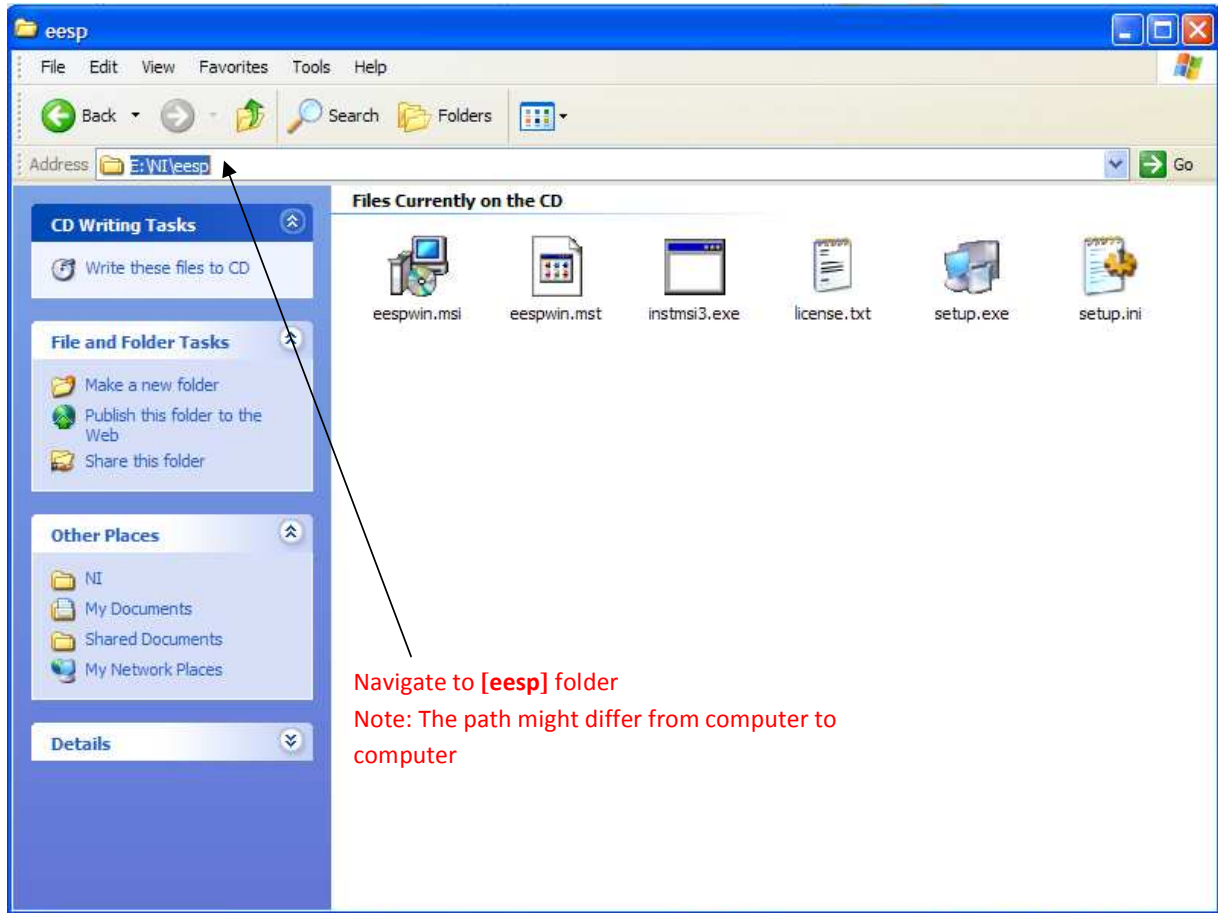
Step 2: Double click on {**setup.msi**}.



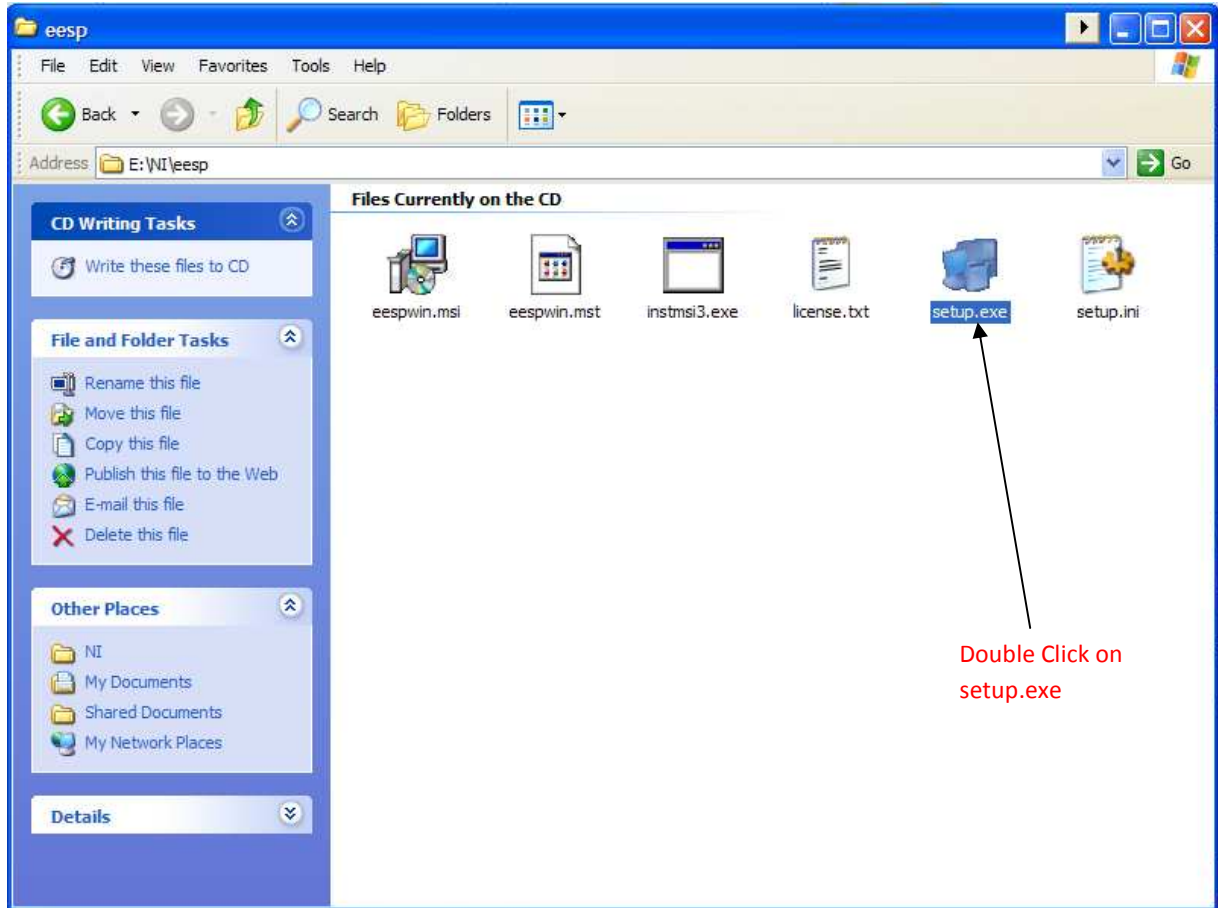
Step 3: Safenet Borderless Security + ikey Driver v4.0.0.20 installation wizard will start, follow the instruction and complete the installation

### 3.2 *Installing EESP 8*

Step 1: Navigate to **[eesp]** folder



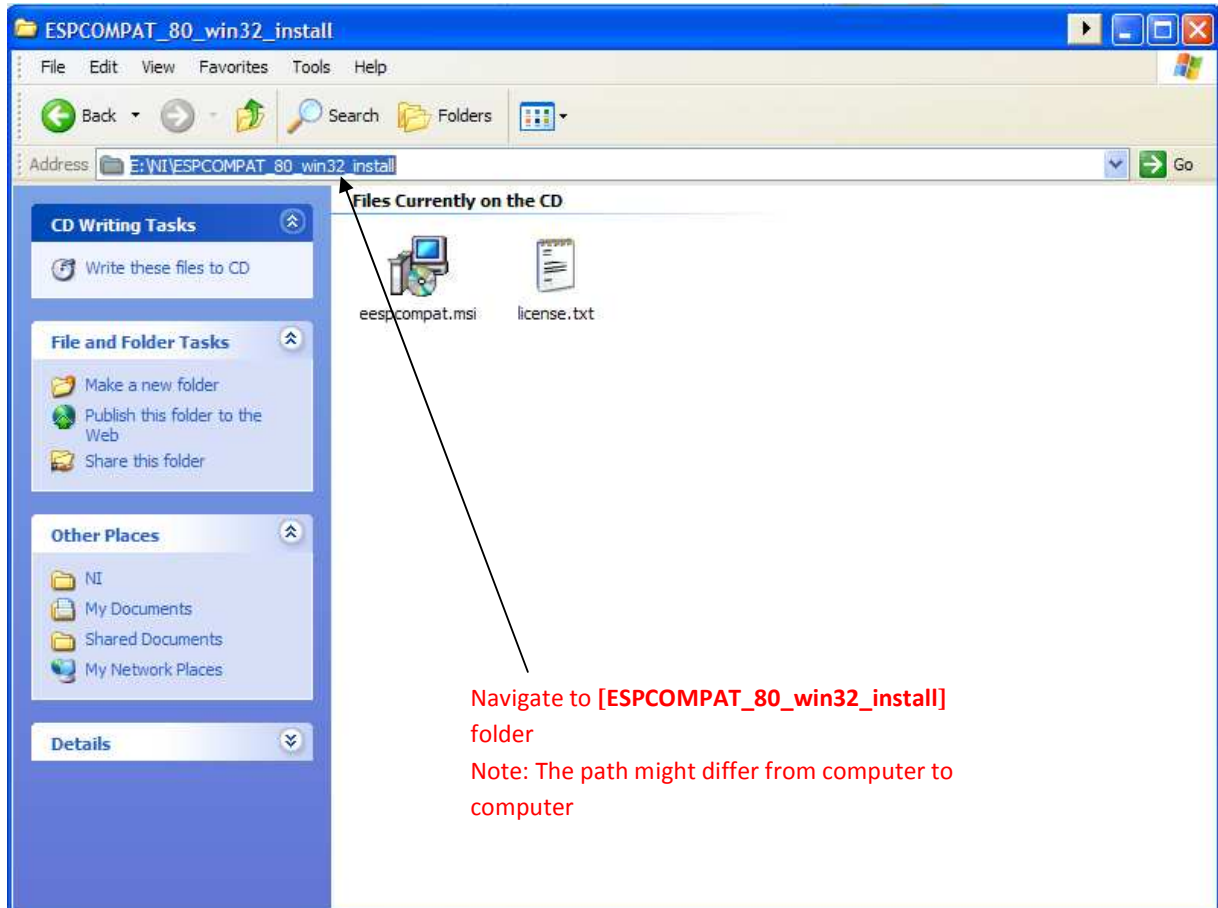
Step 2: Double click on {**setup.exe**}



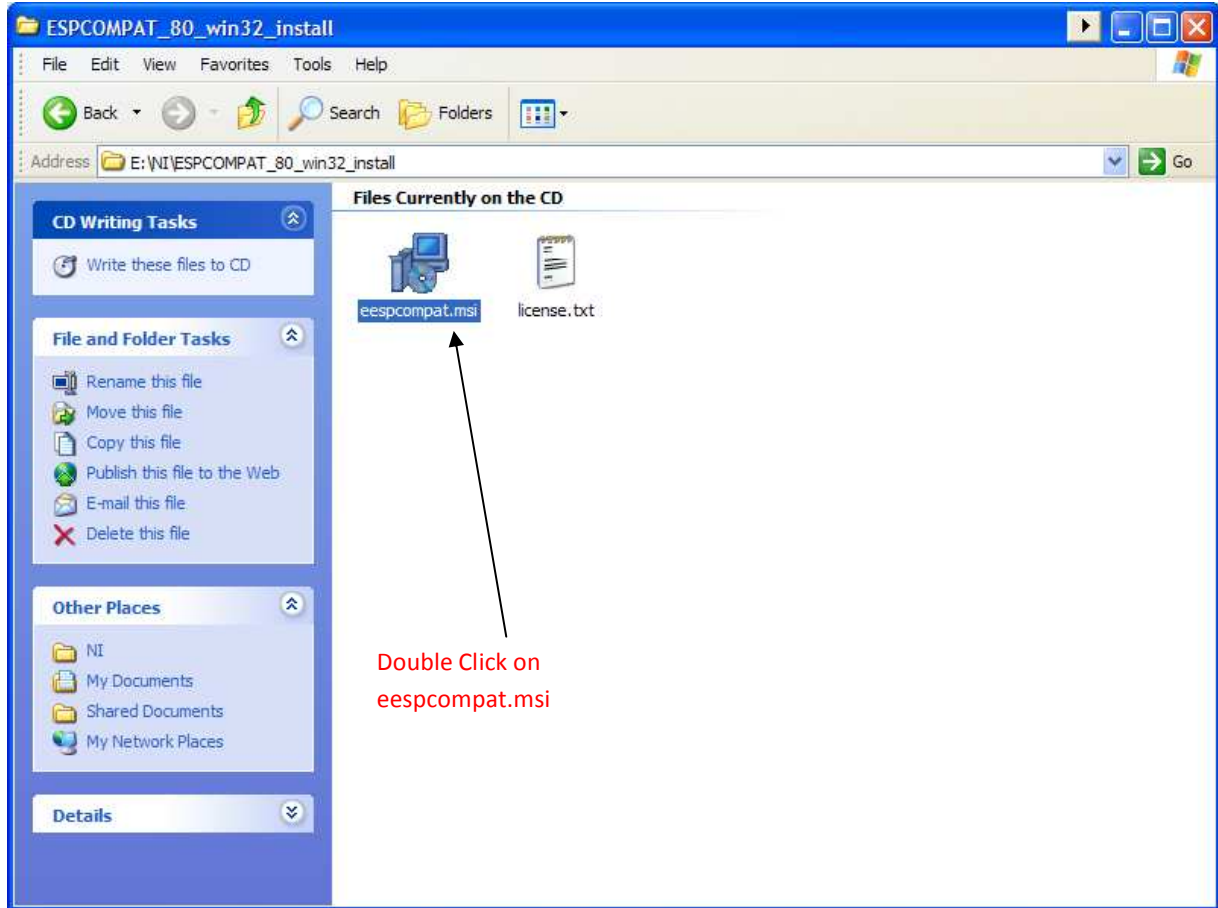
Step 3: EESP 8 installation wizard will start, follow the instruction and complete the installation

### 3.3 *Installing EESPCOMPAT*

Step 1: Navigate to [EESPCOMPAT\_80\_win32\_install] folder



Step 2: Double click on {eespcompat.msi}



Step 3: ESPCOMPAT installation wizard will start, follow the instruction and complete the installation